



Entaniya
Product Catalogue



Entaniya Fisheye

Entaniya's fisheye lenses are not only known for their wide angle field of view of over 200 degrees, they are also renowned for their quality. Our high-quality lenses with low aberration produce a sharp image, even on the edges.



HAL 220 Series

Masterpiece of fisheye lenses

The ultimate fisheye lens for the highest quality. This lens produces sharp images even when used with ultra-high resolution cameras.



HAL 220 LF

HAL 220 PL

HAL 220 LF

220 degree Large Format Fisheye Lens

The lens with an image circle that covers a large-format sensor.



220 degree Large Format Fisheye



Entaniya Fisheye HAL 220 LF T2.9

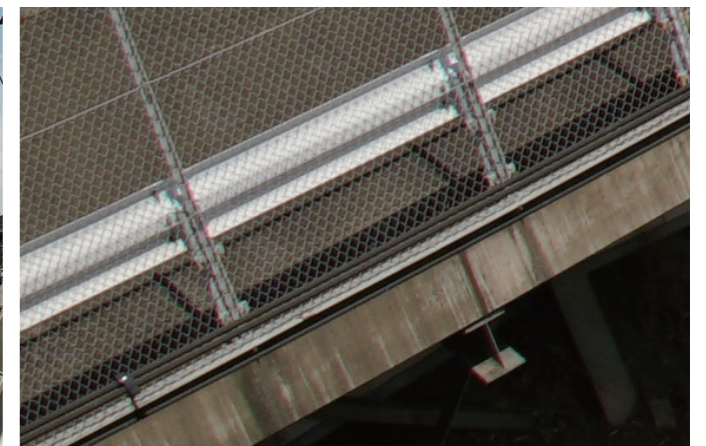


220 degree fisheye lens.
The maximum 46.3mm image circle that covers a large-format sensor allows you to shoot ultra wide angle images with a diagonal of 220 degrees.
The size of the image circle can be changed by using the spacer rings. (Included.)

Optical Construction : 17 elements in 12 groups
Lens diameter : ϕ 125mm
Weight : 2,500g
Mounts : PL, LPL
Image Circle : ϕ 33.1mm - 46.3mm
Aperture : T2.9-22
Iris Blades : 11
(M4-PL / M4-LPL)



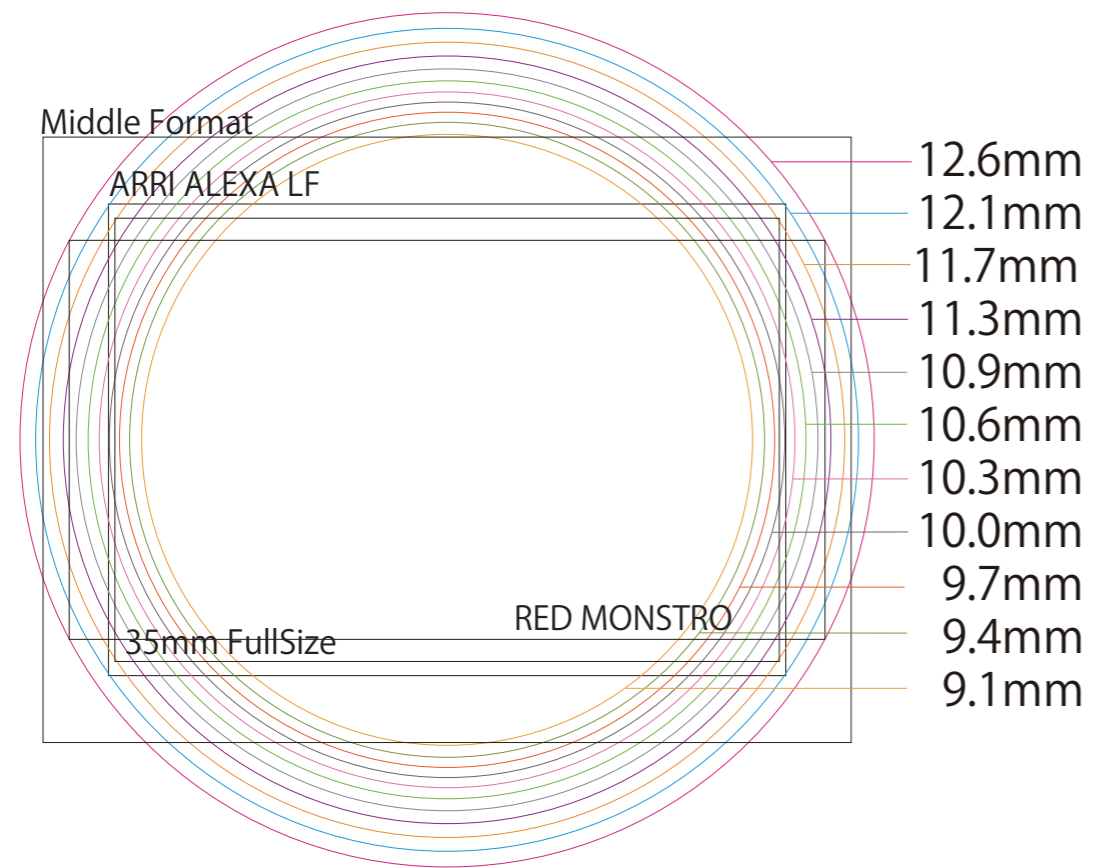
HAL 220 12.6mm (FullFrame 16:9)



Cropped Image

This is an ultra-high quality lens with almost no aberration, even in the periphery of an image taken at 220 degrees diagonal.

HAL 220 LF Image Circle Sizes



Use the zoom spacer ring to change the image circle size in 11 steps. It can be used without loss of angle of view, even when the sensor size changes and select the image circle according to the required angle of view.

Zoom Spacer Rings



Focal Length	180degree (mm)	220degree (mm)
12.6	Φ 38.9	Φ 46.3
12.1	Φ 37.5	Φ 44.6
11.7	Φ 36.2	Φ 43.1
11.3	Φ 34.9	Φ 41.6
10.9	Φ 33.8	Φ 40.2
10.6	Φ 32.7	Φ 38.9
10.3	Φ 31.7	Φ 37.7
10.0	Φ 30.7	Φ 36.6
9.7	Φ 29.8	Φ 35.5
9.4	Φ 28.9	Φ 34.4
9.1	Φ 27.8	Φ 33.1



HAL 220 PL

220 degree Multi Purpose Fisheye Lens

The lens can be used as a diagonal fisheye lens to cover the Super 35 sensor and as a circular fisheye lens for the medium format sensor.

HAL 220 8mm (RED MONSTORO)

220 degree Fisheye

Entaniya Fisheye HAL 220 PL T2.9

PL

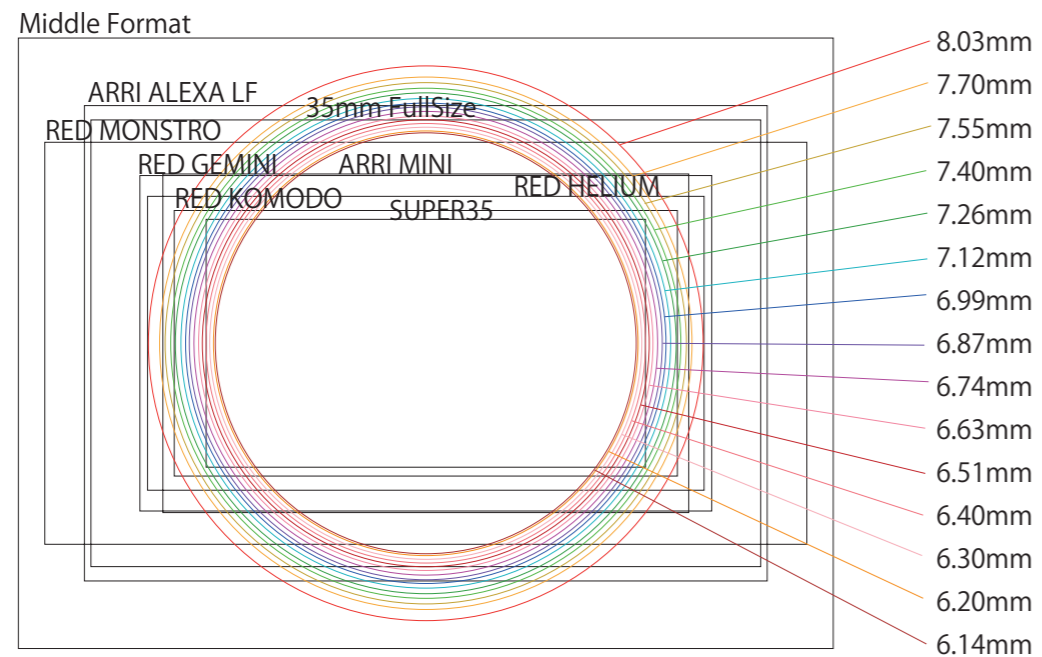


220 degree fisheye lens.
The maximum 29.8mm image circle that covers a Super 35 sensor allows you to shoot ultra wide angle images with a diagonal of 220 degrees.
The size of the image circle can be changed by using the spacer rings. (Included.)

Optical Construction : 17 elements in 12 groups
Lens diameter : ϕ 102mm
Weight : 1,500g
Mounts : PL
Image Circle : ϕ 22.6mm - 29.8mm
Aperture : B9 : T2.9-16 / B11 : T2.9-22
Iris Brades : B9 : 9 / B11 : 11
(M3-B9-PL / M3-B11-PL)

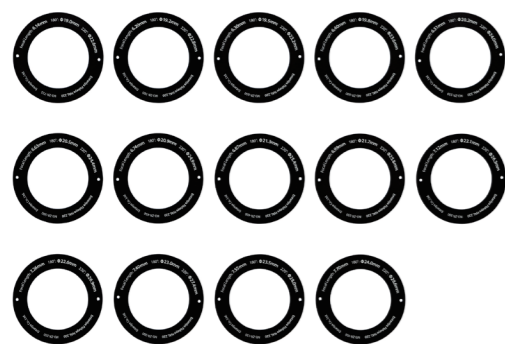


HAL 220 PL Image Circle Sizes



Use the zoom spacer ring to change the image circle size in 14 steps. It can be used without loss of angle of view, even when the sensor size changes and select the image circle according to the required angle of view.

Zoom Spacer Rings



Focal Length	180degree (mm)	220degree (mm)
6.14	Φ 19	Φ 22.6
6.2	Φ 19.2	Φ 22.8
6.3	Φ 19.5	Φ 23.2
6.4	Φ 19.8	Φ 23.6
6.51	Φ 20.2	Φ 24
6.63	Φ 20.5	Φ 24.4
6.74	Φ 20.9	Φ 24.9
6.87	Φ 21.3	Φ 25.4
6.99	Φ 21.7	Φ 25.8
7.12	Φ 22.1	Φ 26.3
7.26	Φ 22.6	Φ 26.9
7.4	Φ 23	Φ 27.4
7.55	Φ 23.5	Φ 28
7.7	Φ 24	Φ 28.6
8.03	Φ 25	Φ 29.8



HAL 220 8mm (FUJIFILM GFX100)



HAL 220 8mm (RED MONSTRO 8K)

HAL 250 Series

250 degree High Angle Lens

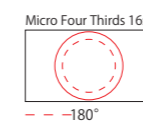
The ultra-wide lens with a 250-degree angle of view. This is a super fisheye lens that minimizes aberration and delivers sharpness to the edge.

250 degree Fisheye 2.3mm MFT

Entaniya Fisheye HAL 250 2.3 F2.8



The 250 degrees image circle in the Micro Four Thirds sensor when shooting at 16:9.



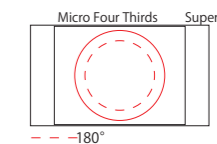
Optical Construction : 18 elements in 12 groups
Lens diameter : ϕ 120mm
Weight : 1,600g
Mounts : MFT
Image Circle : 180° ϕ 7mm / 250° ϕ 9mm
Aperture : F2.8
 (M1-MFT-23)

250 degree Fisheye 3.0mm MFT E C

Entaniya Fisheye HAL 250 3.0 F2.8



The 250 degrees image circle in the Micro Four Thirds sensor and SUPER35.



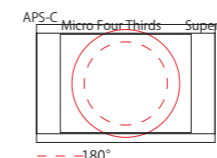
Optical Construction : 18 elements in 12 groups
Lens diameter : ϕ 120mm
Weight : 1,600g
Mounts : MFT / SONY E / C
Image Circle : 180° ϕ 9.2mm / 250° ϕ 11.9mm
Aperture : F2.8
 (M1-MFT-30 / M1-E-30 / M1-C-30)

250 degree Fisheye 3.6mm MFT E C

Entaniya Fisheye HAL 250 3.6 F2.8



The 250 degrees image circle in the APS-C.



Optical Construction : 18 elements in 12 groups
Lens diameter : ϕ 120mm
Weight : 1,600g
Mounts : MFT / SONY E / C
Image Circle : 180° ϕ 11mm / 250° ϕ 14.25mm
Aperture : F2.8
 (M1-MFT-36 / M1-E-36 / M1-C-36)



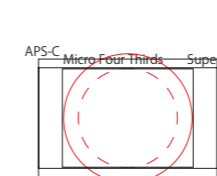
HAL 250 MFT 3.6 (Micro Four Thirds)

250 degree Fisheye 4.3mm E EF

Entaniya Fisheye HAL 250 4.3 F4



The 180 degrees in the SUPER 35 sensor.



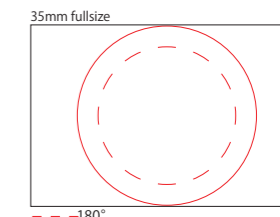
Optical Construction : 18 elements in 12 groups
Lens diameter : ϕ 120mm
Weight : 1,800g
Mounts : SONY E / CANON EF
Image Circle : 180° ϕ 13.1mm / 250° ϕ 17mm
Aperture : F4.0
 (M1-E-43 / M1-EF-4)

250 degree Fisheye 6.0mm E EF

Entaniya Fisheye HAL 250 6.0 F5.6



The 250 degrees image circle in the 35mm fullsize sensor..

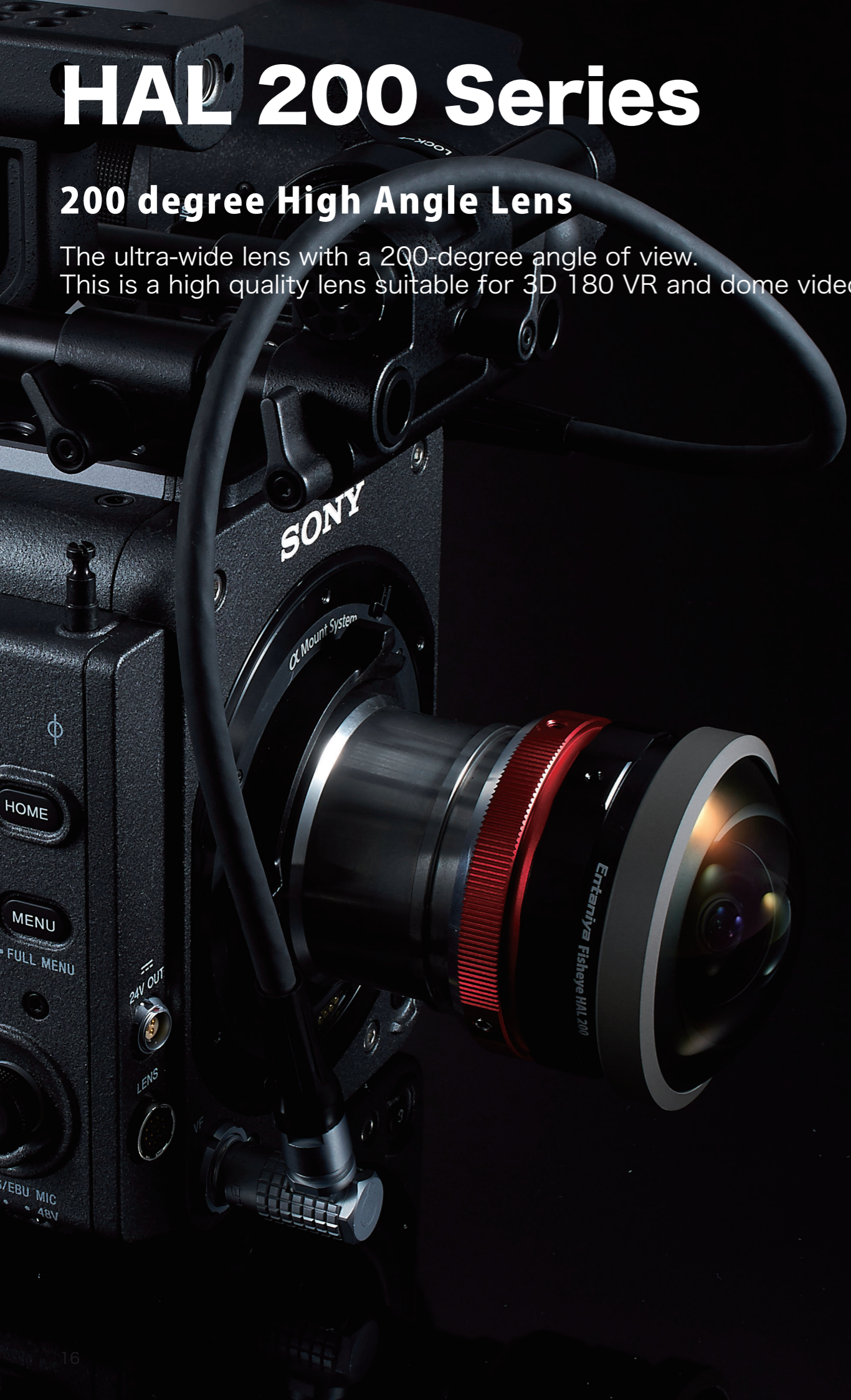


Optical Construction : 18 elements in 12 groups
Lens diameter : ϕ 120mm
Weight : 1,900g
Mounts : SONY E / CANON EF
Image Circle : 180° ϕ 18.2mm / 250° ϕ 23.7mm
Aperture : F5.6
 (M1-E-60 / M1-EF-60)

HAL 200 Series

200 degree High Angle Lens

The ultra-wide lens with a 200-degree angle of view. This is a high quality lens suitable for 3D 180 VR and dome videos.

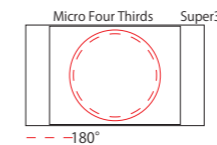


200 degree Fisheye 3.6mm



Entaniya Fisheye HAL 200 3.6 F4

The 200 degrees image circle in the Micro Four Thirds sensor.



Optical Construction : 17 elements in 12 groups
Lens diameter : ϕ 76mm
Weight : 860g
Mounts : MFT / SONY E / C
Image Circle : 180° ϕ 11mm / 200° ϕ 12mm
Aperture : F4
 (M2-MFT-36 / M2-E-36 / M2-C-36)



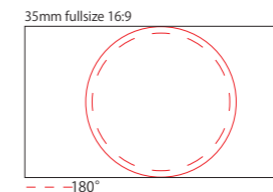
HAL 200 3.6 (Micro Four Thirds)

200 degree Fisheye 6.0mm



Entaniya Fisheye HAL 200 6.0 F4

The 200 degrees image circle in the Fullsize 16:9.



Optical Construction : 17 elements in 12 groups
Lens diameter : ϕ 76mm
Weight : E:948g / EF:790g
Mounts : SONY E / CANON EF
Image Circle : 180° ϕ 18.2mm / 250° ϕ 19.9mm
Aperture : F4
 (M2-E-60 / M2-EF-60)



HAL 200 6.0 (Fullsize 16:9)

Custom Lenses

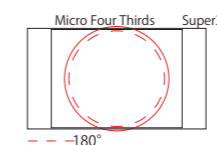
The Entaniya Fisheye can customize to suit the user's specific requirements.

220 degree Custom Fisheye



Entaniya Fisheye HAL 200 4.2 F4

The 180 degrees in the SUPER 35 sensor. HAL 200 3.6 customized. **Built-to-order**



Optical Construction : 17 elements in 12 groups
Lens diameter : ϕ 76mm
Weight : 860g
Mounts : SONY E / CANON EF
Image Circle : 180° ϕ 13.8mm / 250° ϕ 12.7mm
Aperture : F4.0
 (M2-MFT-42 / M2-E-42 / M2-C-42)



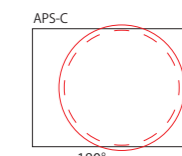
3D 180 VR RIG (3D-RIG)

220 degree Custom Fisheye



Entaniya Fisheye HAL 200 5.0 F5.6

HAL 200 6.0 customized. **Built-to-order**



Optical Construction : 17 elements in 12 groups
Lens diameter : ϕ 76mm
Weight : E:948g / EF:790g
Mounts : SONY E / CANON EF
Image Circle : 180° ϕ 15.2mm / 250° ϕ 16.6mm
Aperture : F5.6
 (M2-E-50 / M2-EF-5)

SPECIFICATIONS

Lens Name	Optical Construction [Elements / Groups]	Image Size [180 degree]	Image Size	Iris Blades	Angle of View Micro Four Thirds	Angle of View S35	Angle of View FullFrame	Fno.	Diameter x Length	Weight	Mount
■ HAL 220 series											
HAL 220 LF	17/12	φ 27.8 -38.9 mm	φ 33.1 - 46.3 mm	11	-	-	H:220 V:155 H:170 V:111 D:205	T2.9 - T22	125 x 145 mm	2.6 kg	PL / LPL
HAL 220 B9 PL	17/12	φ 19.0 -25.0 mm	φ 22.6 - 29.8 mm	9	H:145 V:121 D:205 H:110 V:92 D:155	H:220 V:125 H:170 V:95 D:202	H:220 V:220 H:220 V:172	T2.9 - T16	102 x 134.6 mm	1.6 kg	PL
HAL 2200 B11 PL	17/12	φ 19.0 -25.0 mm	φ 22.6 - 29.8 mm	11	H:145 V:121 D:205 H:110 V:92 D:155	H:220 V:125 H:170 V:95 D:202	H:220 V:220 H:220 V:172	T2.9 - T22	102 x 134.6 mm	1.6 kg	PL
■ HAL 250 series											
HAL 250 2.3	18/12	φ 7 mm	φ 9 mm	-	H:250 V:250	H:250 V:250	-	F2.8	120 x 95.2 mm	1.6 kg	MFT
HAL 250 3.0	18/12	φ 9.2mm	φ 11.9 mm	-	H:250 V:250	H:250 V:250	-	F2.8	120 x 95 mm	1.6 kg	MFT / E / C
HAL 250 3.6	18/12	φ 11 mm	φ 14.25 mm	-	H:250 V:220	H:250 V:210	-	F2.8	120 x 93.6 mm	1.6 kg	MFT / E / C
HAL 250 4.3	18/12	φ 13.1 mm	φ 17 mm	-	H:250 V:170	H:250 V:180	H:250 V:250	F4.0	120 x 105 mm	1.8 kg	E / EF
HAL 250 6.0	18/12	φ 18.2 mm	φ 23.7 mm	-	H:170 V:125 D:230	H:245 V:125	H:250 V:250	F5.6	120 x 115 mm	1.8 kg	E / EF
■ HAL 200 series											
HAL 200 3.6	17/11	φ 11 mm	φ 12 mm	-	H:200 V:200	H:200 V:200	-	F4.0	76 x 97 mm	0.86 kg	MFT / E / C
HAL 200 4.2	17/11	φ 12.4 mm	φ 13.8 mm	-	H:200 V:180	H:200 V:190	-	F4.0	76 x 97 mm	0.86 kg	MFT / E / C
HAL 200 5.0	17/11	φ 15.2 mm	φ 16.6 mm	-	H:200 V:150	H:200 V:150	-	F5.6	78 x 115 mm	0.9 kg	E / EF
HAL 200 6.0	17/11	φ 18.2 mm	φ 19.9 mm	-	H:165 V:125	H:200 V:130	H:200 V:200	F4.0	78 x 110 mm	0.9 kg	E / EF



HAL 220 LF



HAL 250 2.3



HAL 250 3.6



HAL 200 3.6



HAL 220 PL



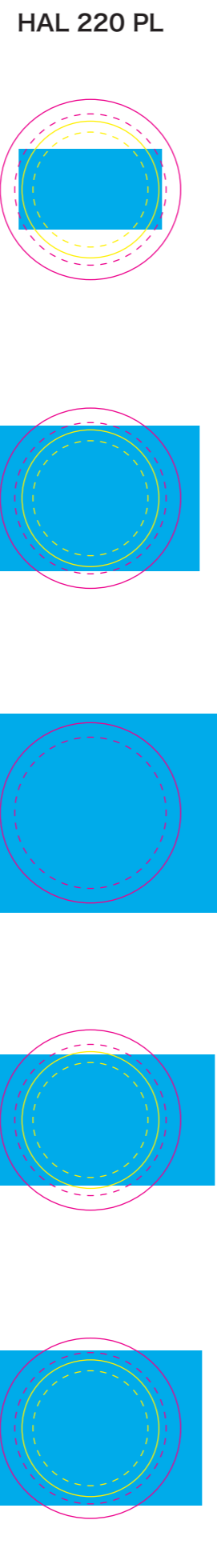
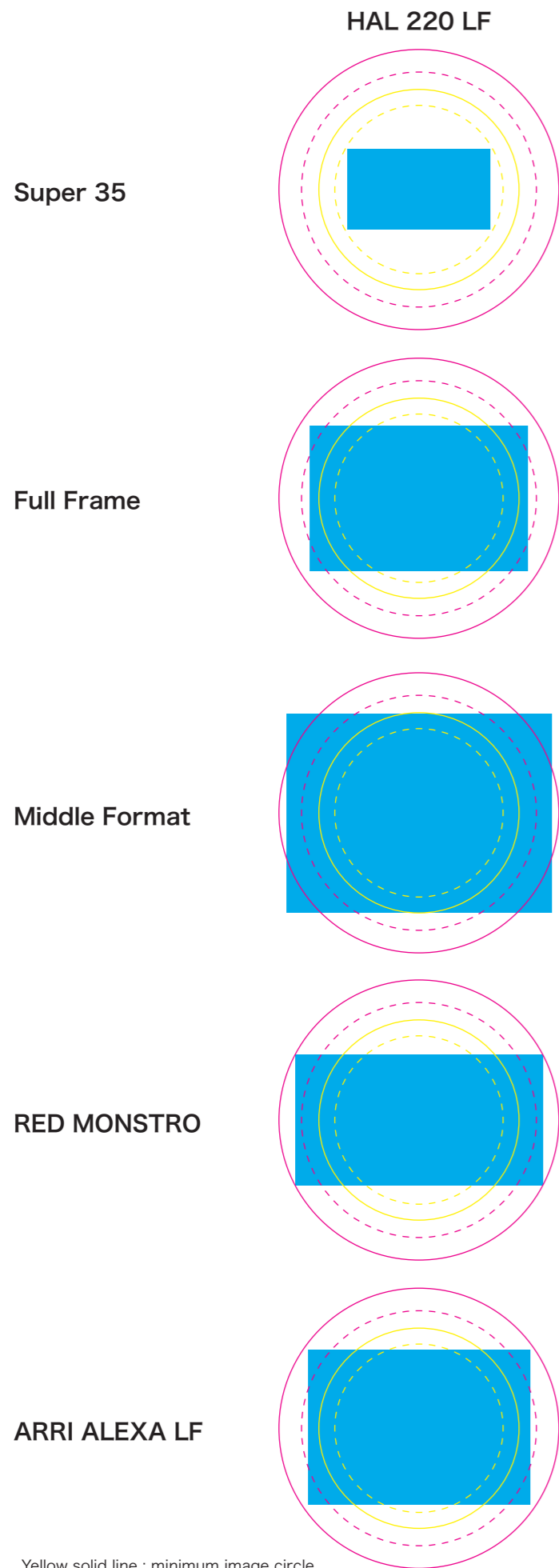
HAL 250 3.0



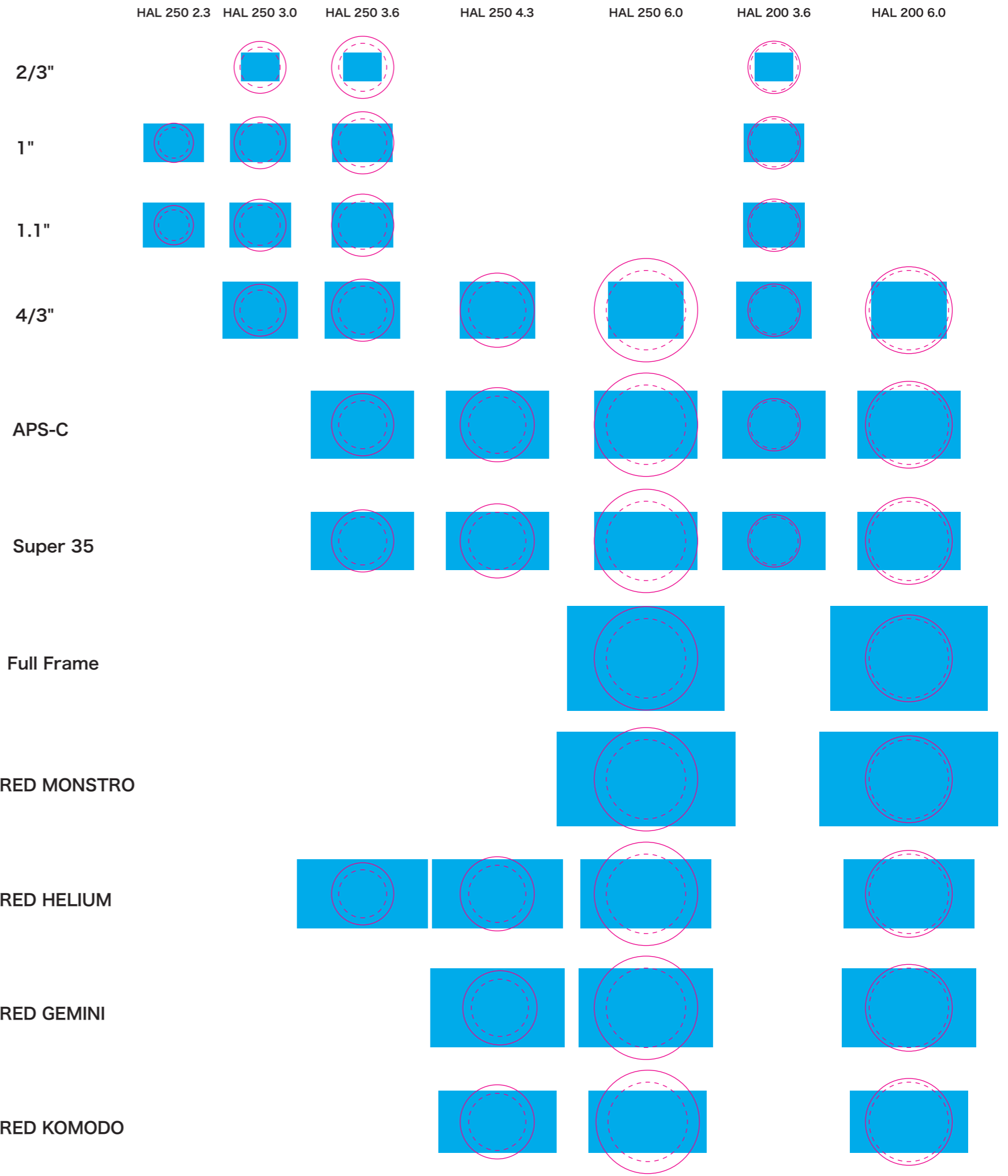
HAL 250 4.3



HAL 200 6.0



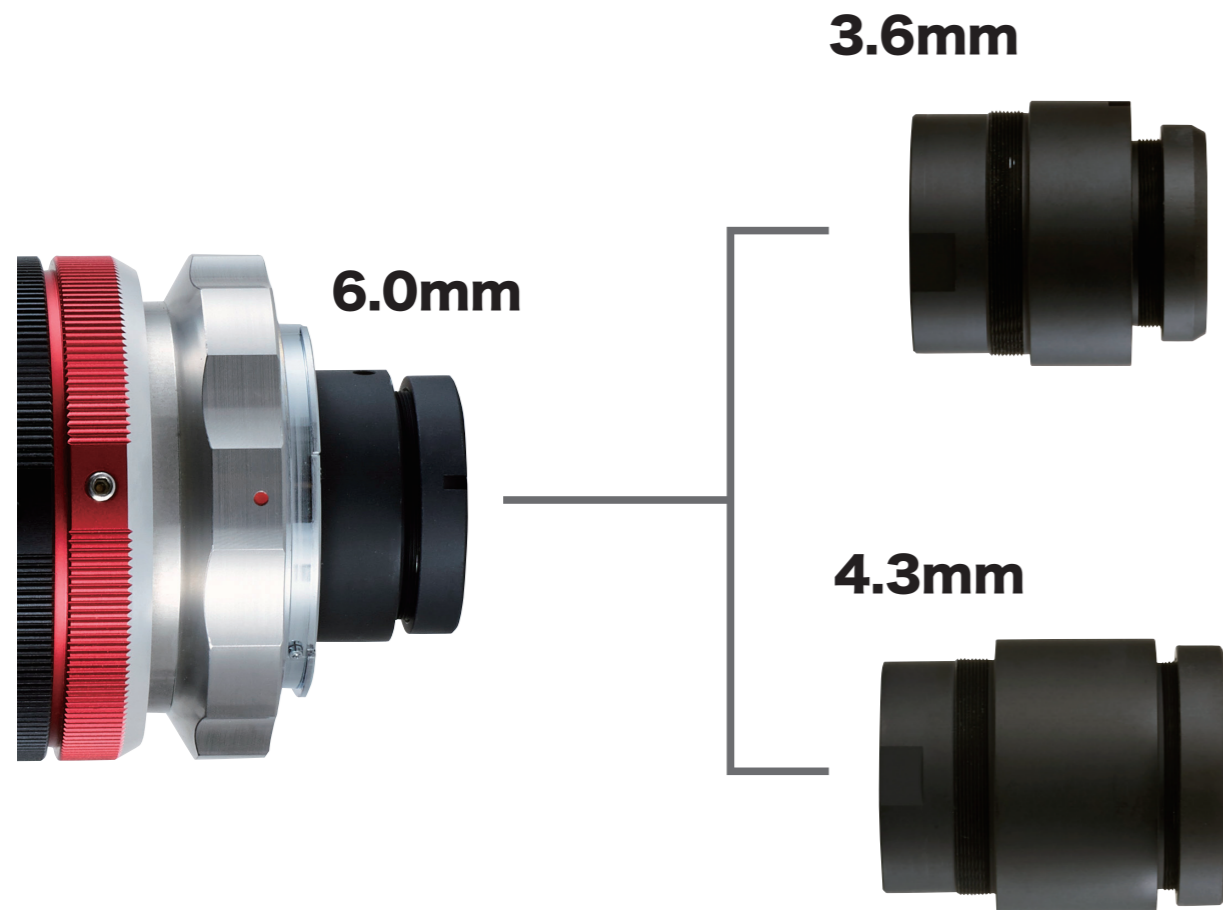
Yellow solid line : minimum image circle.
 Yellow dot line : minimum 180 degree image circle
 Red solid line : maximum image circle.
 Red dot line : maximum 180 degree image circle



Rear Elements

The HAL 250 and HAL 200 series can change the focal length by replacing the rear element.

The system allows you to select the image circle according to the sensor size.



HAL 250 Rear Group 2.3mm



Entaniya HAL 250 Rear 2.3 F2.8



Focal Length : 2.3mm
Image Circle : 180° ϕ 7mm / 250° ϕ 9mm
Aperture : F2.8
(RGK-M1-23)

HAL 250 Rear Group 3.0mm



Entaniya HAL 250 Rear 3.0 F2.8



Focal Length : 3.0mm
Image Circle : 180° ϕ 9.2mm / 250° ϕ 11.9mm
Aperture : F2.8
(RGK-M1-30)

HAL 250 Rear Group 3.6mm



Entaniya HAL 250 Rear 3.6 F2.8



Focal Length : 3.6mm
Image Circle : 180° ϕ 11mm / 250° ϕ 14.25mm
Aperture : F2.8
(RGK-M1-36)

HAL 250 Rear Group 4.3mm



Entaniya HAL 250 Rear 4.3 F4



Focal Length : 4.3mm
Image Circle : 180° ϕ 13mm / 250° ϕ 17mm
Aperture : F4
(RGK-M1-43)

HAL 250 Rear Group 6.0mm



Entaniya HAL 250 Rear 6.0 F5.6



Focal Length : 6.0mm
Image Circle : 180° ϕ 18.2mm / 250° ϕ 23.7mm
Aperture : F2.8
(RGK-M1-60)

HAL 200 Rear Group 3.6mm



Entaniya HAL 200 Rear 3.6 F4



Focal Length : 3.6mm
Image Circle : 180° ϕ 11mm / 200° ϕ 12mm
Aperture : F4
(RGK-M2-36)

HAL 200 Rear Group 6.0mm



Entaniya HAL 200 Rear 6.0 F4



Focal Length : 6.0mm
Image Circle : 180° ϕ 18.2mm / 200° ϕ 19.9mm
Aperture : F2.8
(RGK-M2-60)

Mount Adapters

Micro Four Thirds, Sony E, C, and Canon EF

The HAL 250 and HAL 200 series can be attached to various cameras with interchangeable mounting adapters.



MFT

250 2.3 250 3.0 250 3.6 200 3.6

Entaniya Mount Adapter MFT



HAL 250 2.3 / HAL 250 3.0 / HAL 250 3.6 / HAL 200 3.6 (MA-MFT)

Sony E

250 2.3 250 3.0 250 3.6 200 3.6

Entaniya Mount Adapter E

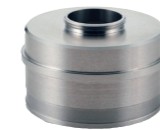


HAL 250 3.0 / HAL 250 3.6 / HAL 200 3.6 (MA-E)

C

250 2.3 250 3.0 250 3.6 200 3.6

Entaniya Mount Adapter C



HAL 250 3.0 / HAL 250 3.6 / HAL 200 3.6 (MA-C)

Canon EF

250 4.3 200 6.0

Entaniya Mount Adapter EF

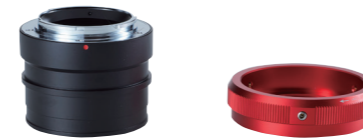


HAL 250 4.3 / HAL 200 6.0 (MA-EF)

Sony E2

250 4.3 200 6.0

Entaniya Mount Adapter E2



HAL 250 4.3 / HAL 200 6.0 (MA-E2)

Canon EF2

250 6.0

Entaniya Mount Adapter EF2



HAL 250 6.0 (MA-EF2)

Sony E3

250 6.0

Entaniya Mount Adapter E3

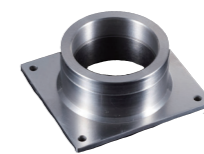


HAL 250 4.3 / HAL 200 6.0 (MA-E3)

RED DSMC2

250 3.6 200 3.6

Entaniya Mount Adapter EF2



This mount adapter compatible with RED DSMC2 front panel. RED HELIUM, RED GEMINI and RED MONSTRO.



HAL 250 3.6 / HAL 200 3.6 (MA-RE)

Accessories



Safety Ring (SR-250)

Spare Parts

ND Filters



The HAL series lenses have an ND pocket on the lens bottom. You can add the ND filters on it.

HAL 250 2.3 / 3.0 / 3.6 HAL 200 3.6 (1 x 0.6 / 1 x 1.2) (ND-1)
 HAL 250 4.3 / HAL 200 6.0 (1 x 0.6 / 1 x 1.2) (ND-2)
 HAL 250 6.0 / HAL 220 PL (1 x 1.2) (ND-3)
 HAL 220 LF (1 x 1.2) (ND-4)

Spare Parts

Lens Support

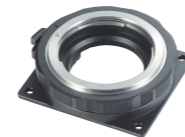


(MA-1-13m)

Lens support for MFT mount, E mount, C mount of the HAL series. (MA-1-13m)

Mount Adapter for RED

EF Mount Adapter For RED



(MA-RED)

This mount adapter compatible with the RED DSMC2 cameras and any the EF mount lenses. (MA-RED)

Spare Parts

IR Cut filter



HAL 250 2.3 / 3.0 / 3.6 HAL 200 3.6 (IRCF-1)
 HAL 250 4.3 / HAL 200 6.0 (IRCF-2)
 HAL 250 6.0 / HAL 220 PL (IRCF-3)
 HAL 220 LF (IRCF-4)

Spare Parts

Aperture Rings



The HAL series lenses have an internal aperture ring that allows you to change the f-number of the lens.

HAL 250 2.3 / 3.0 (ARS-1) HAL 250 3.6 (ARS-2) HAL 200 3.6 (ARS-3)
 HAL 250 4.3 / HAL 200 6.0 (ARS-4) HAL 250 6.0 (ARS-5)

Accessories

Lens Support for HAL 200 EF mount

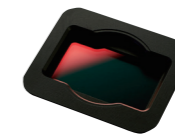


(MA-2)

Lens support for EF mount of the HAL 200 series. It is required when you use the HAL 200 EF lens with the 3D Stereo 180 VR Rig (RIG-3D). (MA-2)

OLPF for RED

RED OLPF



RED HELIUM/GEMINI(OLPF-RED1)
 RED MONSTRO(OLPF-RED2)

This OLPF(Optical Low Pass Filter) when using the HAL EF mount lenses with RED DSMC2. It is compatible with the RED DSMC2 cameras.

Accessories

Safety Ring



HAL250(SR-250)
 HAL200(SR-200)

The Safety Ring is able to pass the string through the hole on the reinforcement part. HAL250(SR-250) HAL200(SR-200)

VR Rigs



VR Stand (VS-2)



3D 180 VR Rig

3D 180 VR Rig



(RIG-3D)

D stereo 180 VR rig for mirrorless cameras. Cameras and lenses and lens support are not included.

360 VR Rig

Rig RED Side by Side

Side by Side rig for RED DSMC2



(RIG-RED-SS)



360 VR Rig

Rig GH5 Side by Side 13m



(RIG-GH5-SS)

Side by Side rig for Panasonic LUMIX GH5 and GH5s



360 VR Rig

Rig One Cam 13m

By setting this rig to the camera the tripod holes can be placed to the backside of the camera, making it easy to attach the tripod and shoot upwards.



(RIG-OC)



360 VR Rig

VR Stand for Video



(VS-2)

By using Entaniya VR Stand and Entaniya Fisheye HAL250 lens, anyone can to easily shoot 360-degree with a matched nodal point with only one camera.

M12 Series

220 / 250 / 280 degree S mount lenses

These are high-quality wide-angle fisheye lenses suitable for various applications such as board camera, security camera, Machine Vision, 3D scanner, 360 camera and so on.



200 degree Fisheye

Entaniya Fisheye M12 220 F2.0



Angel of View : 220°
Optical Construction : 10 elements + IR Filter
Lens diameter : ϕ 40mm
Weight : 52g
Mount : M12 P0.5 (S mount) + CS mount adapter
Projection : Equidistant
Image Circle : ϕ 5.1mm (1/3.2" -1/1.7"Sensor)
Aperture : F2.0
(EF-220)



M12 220 (1/2.3")

250 degree Fisheye

Entaniya Fisheye M12 250 F2.8



Angel of View : 250°
Optical Construction : 11 + IR Filter
Lens diameter : ϕ 50mm
Weight : 79g
Mount : M12 P0.5 (S mount) + CS mount adapter
Projection : Equidistant
Image Circle : ϕ 5.5mm (1/3.2" -1/1.7"Sensor)
Aperture : F2.8
(EF-250)



M12 250 (1/2.3")

280 degree Fisheye

Entaniya Fisheye M12 280 F2.8



Angel of View : 280°
Optical Construction : 12 + IR Filter
Lens diameter : ϕ 64mm
Weight : 175g
Mount : M12 P0.5 (S mount) + CS mount adapter
Projection : Equisolid angle
Image Circle : ϕ 5.1mm (1/3.2" -1/2.3"Sensor)
Aperture : F2.8
(EF-280)



M12 280 (1/2.3")

M12 220

M12 250

M12 280

1/4"



1/3.6"



1/3.2"



1/3"



1/2.9"



1/2.7"



1/2.5"



1/2.3"



1/1.8"



1/1.7"



2/3"

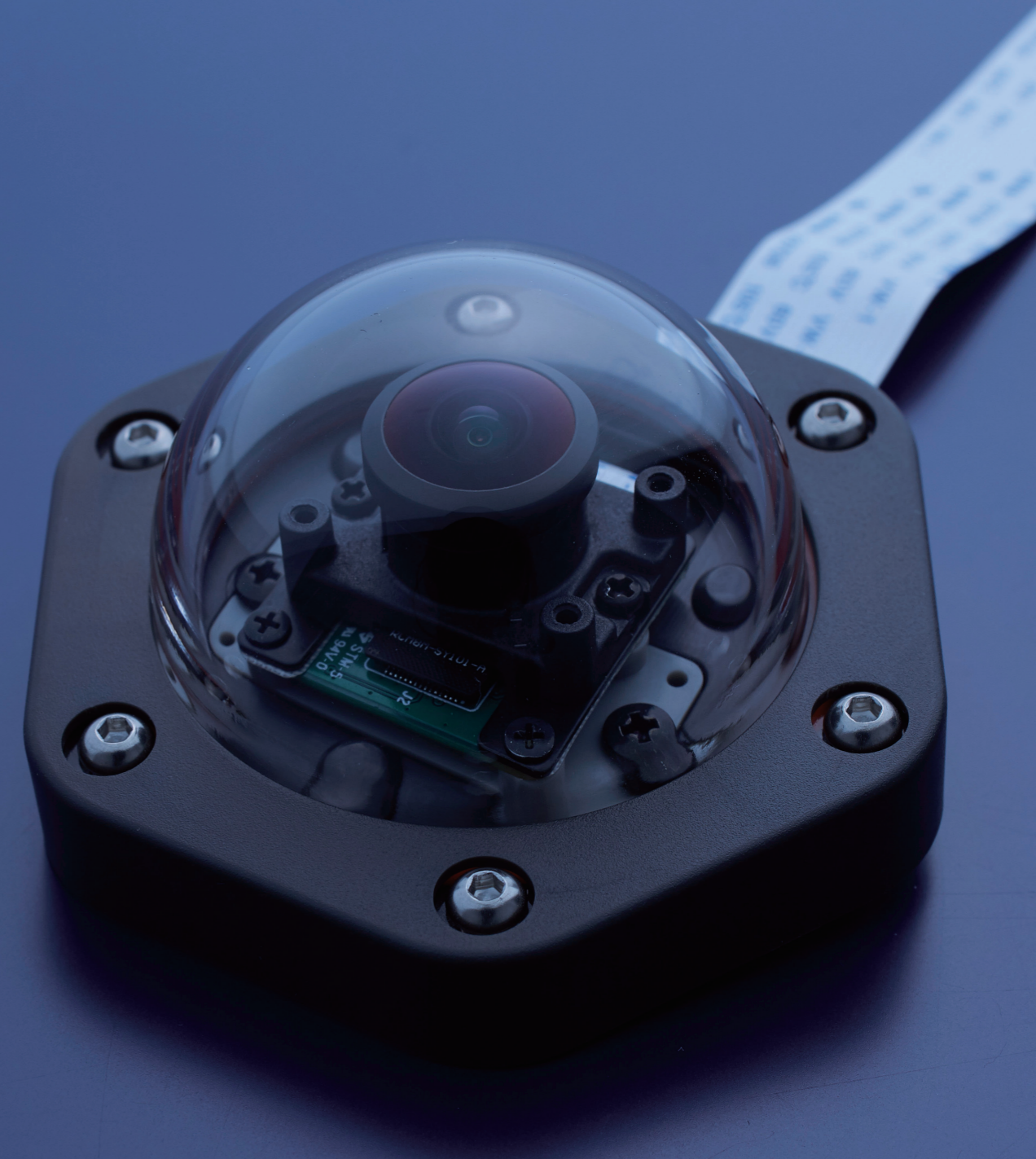


Others

Camera Module MOD KIT for RaspberryPi and Sony SPRESENSE

All-Weather Case for Camera Module

Bubble Level



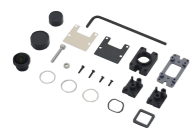
RaspberryPi

RaspberryPi Camera V2 MOD KIT MOD Camera All Weather Case



RaspberryPi Camera Module

RaspberryPi VR 220 MOD KIT

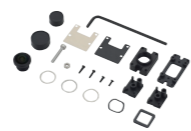


(RP-MK1)

Raspberry Pi VR 220 MOD KIT is for attaching a 220° lens (Super Wide Fisheye) to the Raspberry Pi Camera V2. Raspberry Pi Camera V2 is not included.

RaspberryPi Camera Module

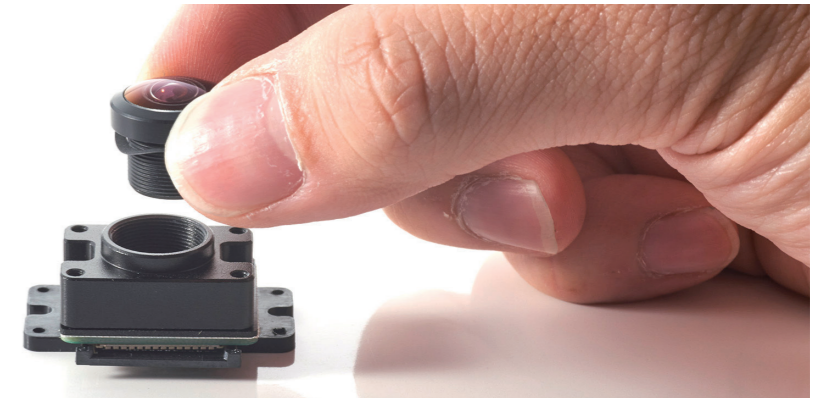
NoIr RaspberryPi VR 220 MOD KIT



(RP-MK1N)

Raspberry Pi VR 220 MOD KIT is for attaching a 220° lens (Super Wide Fisheye) to the Raspberry Pi Camera V2. Raspberry Pi Camera V2 is not included.

Attaching Lenses



RaspberryPi Camera Module

VR 220 Camera



(RP-VC1)

Raspberry Pi VR 220 Camera is Pre-Assembled module.

RaspberryPi Camera Module

NoIr VR 220 Camera



(RP-VC1N)

Raspberry Pi VR 220 Camera is Pre-Assembled module.

Housing Case

Water Proof Case (All Weather Type)



(WC-01)

The waterproof and dustproof case for Raspberry Pi's and SPRESENSE's Camera Module.

Accessory

Water Proof Case Mount



(WCM-01)

Mounting bracket for Water Proof Case(WC-01)

Lens

RP-L220 / NoIr RP-L220

220 degree



(RP-L220) / (RP-L220N)



Lens

RP-L195 / NoIr RP-L195

195 degree



(RP-L195) / (RP-L195N)



Lens

RP-L165 / NoIr RP-L165

165 degree



(RP-L165) / (RP-L165N)



Lens

RP-L98 / NoIr RP-L98

98 degree

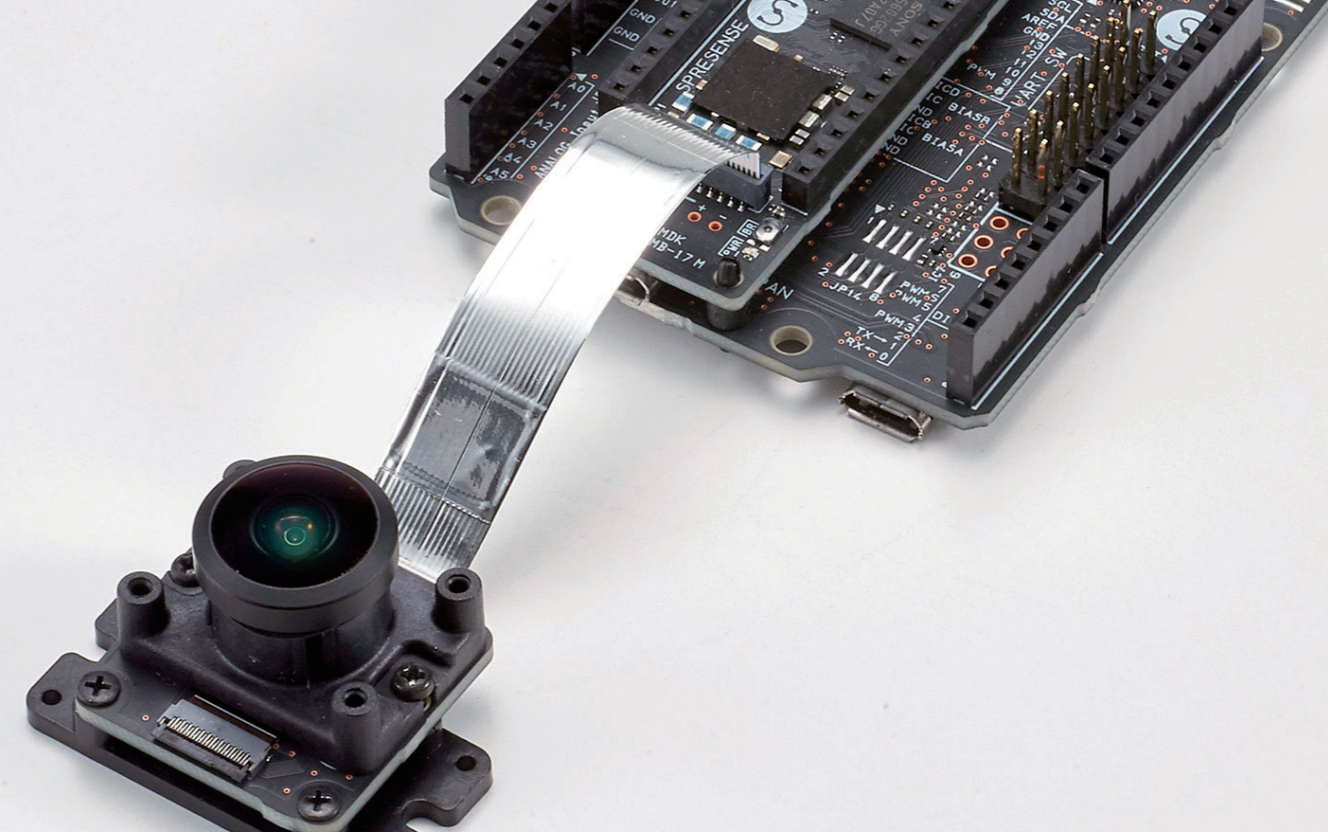


(RP-L98) / (RP-L98N)



SPRESENSE

Camera Module MOD KIT MOD Camera All Weather Case



Sony SPRESENSE Camera Module

VR 220 MOD KIT for SPRESENSE



(SS-MK1)

VR 220 MOD KIT is for attaching a 220° lens (Super Wide Fisheye) to the Sony SPRESENSE camera module. Sony SPRESENSE camera module is not included.

Sony SPRESENSE Module

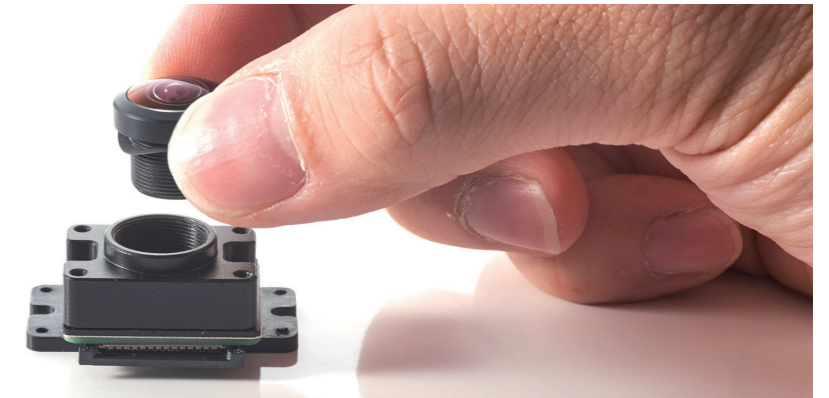
VR 220 Camera for SPRESENSE



(SS-VC1)

VR 220 Camera is Pre-Assembled module.

Attaching Lenses



Housing Case

Water Proof Case (All Weather Type)



(WC-01)

The waterproof and dustproof case for Raspberry Pi's and SPRESENSE's Camera Module.

Accessory

Water Proof Case Mount



(WCM-01)

Mounting bracket for Water Proof Case(WC-01)



Lens

SS-L220



(SS-L220)

220 degree



Lens

SS-L195



(SS-L195)

195 degree



Lens

SS-L165



(SS-L165)

165 degree



Lens

SS-L98



(SS-L98)

98 degree



Level

Bubble Level with a screw (1/4" or 3/8")

Level

BL1414



Diameter : ϕ 14.5mm
Screw : 1/4"-20UNC
(BL1414)

Level

BL1438



Diameter : ϕ 14.5mm
Screw : 3/8"-16UNC
(BL1438)

Level

BL1814



Diameter : ϕ 18.5mm
Screw : 1/4"-20UNC
(BL1814)

Level

BL1838



Diameter : ϕ 18.5mm
Screw : 3/8"-16UNC
(BL1838)

Level

BL2314



Diameter : ϕ 23.5mm
Screw : 1/4"-20UNC
(BL2314)

Level

BL2338



Diameter : ϕ 23.5mm
Screw : 3/8"-16UNC
(BL2338)



Entaniya Co., Ltd.
ITO BLDG 5F, 2-5-13, Nishiwaseda, Shinjuku-ku, Tokyo, 169-0051, Japan
<https://entaniya.co.jp>

Specifications and equipment are subject to change without any notice or obligation on the part of the manufacturer.