



Entaniya

C mount / CS mount / S mount

High-Quality Super-Wide Fisheye Lenses





Entaniya Fisheye

Machine Vision Series

EF-mount

C-mount

CS-mount

S-mount

The Entaniya Fisheye is a high quality fisheye lens that minimizes vignetting and blurring despite being an ultra-wide angle lens.

As cameras become more high-resolutions, so does the need for better lens performance.

Entaniya's lenses remain sharp even at high pixel counts exceeding 8K.

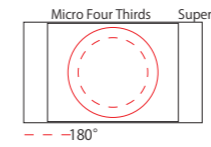


250 degree Fisheye 3.0mm C-mount

Entaniya Fisheye HAL 250 3.0 F2.8



The 250 degrees image circle in the Micro Four Thirds sensor and SUPER35.



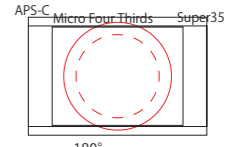
Optical Construction : 18 elements in 12 groups
Lens diameter : ϕ 120mm
Weight : 1,600g
Mounts : C
Image Circle : 180° ϕ 9.2mm / 250° ϕ 11.9mm
Aperture : F2.8
 (M1-C-30)

250 degree Fisheye 3.6mm C-mount

Entaniya Fisheye HAL 250 3.6 F2.8



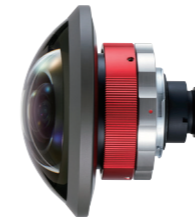
The 250 degrees image circle in the APS-C.



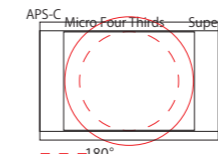
Optical Construction : 18 elements in 12 groups
Lens diameter : ϕ 120mm
Weight : 1,600g
Mounts : C
Image Circle : 180° ϕ 11mm / 250° ϕ 14.25mm
Aperture : F2.8
 (M1-C-36)

250 degree Fisheye 4.3mm EF-mount

Entaniya Fisheye HAL 250 4.3 F4



The 180 degrees in the SUPER 35 sensor.



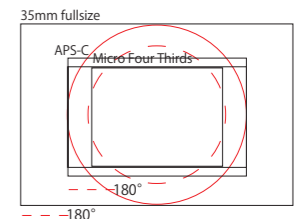
Optical Construction : 18 elements in 12 groups
Lens diameter : ϕ 120mm
Weight : 1,800g
Mounts : CANON EF
Image Circle : 180° ϕ 13.1mm / 250° ϕ 17mm
Aperture : F4.0
 (M1-EF-4)

250 degree Fisheye 6.0mm EF-mount

Entaniya Fisheye HAL 250 6.0 F5.6



The 250 degrees image circle in the 35mm fullsize sensor.



Optical Construction : 18 elements in 12 groups
Lens diameter : ϕ 120mm
Weight : 1,900g
Mounts : CANON EF
Image Circle : 180° ϕ 18.2mm / 250° ϕ 23.7mm
Aperture : F5.6
 (M1-EF-60)

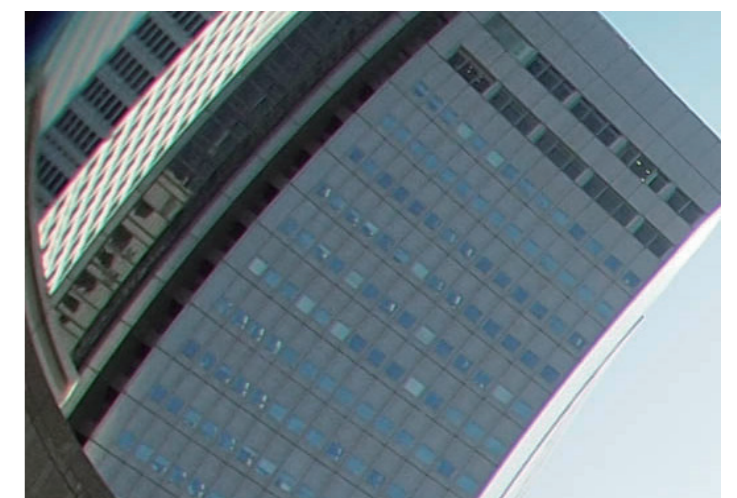
HAL 250

250 degree Fisheye C-mount
 EF-mount

This is an ultra-wide angle fisheye lens with a 250 degree field of view. This is a special lens that shows the rear of the image rather than the camera.



HAL 250 MFT 3.6 (Micro Four Thirds)



peripheral



HAL 200

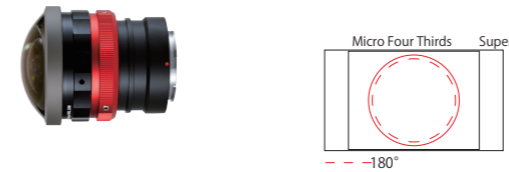
200 degree Fisheye C-mount EF-mount

This is an ultra-wide angle fisheye lens with a 200 degree field of view. Lighter and more compact than a 250-degree lens. The 200-degree field of view is extremely sharp, even near the 180-degree range of a typical fisheye lens.

200 degree Fisheye 3.6mm C-mount

Entaniya Fisheye HAL 200 3.6 F4

The 200 degrees image circle in the Micro Four Thirds sensor.



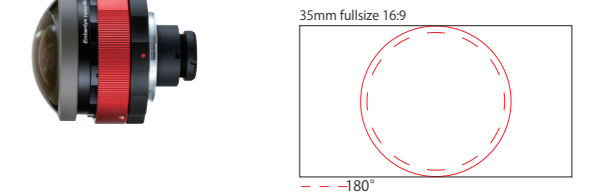
Optical Construction : 17 elements in 12 groups
Lens diameter : ϕ 76mm
Weight : 860g
Mounts : C
Image Circle : 180° ϕ 11mm / 200° ϕ 12mm
Aperture : F4
 (M2-C-36)



200 degree Fisheye 6.0mm EF-mount

Entaniya Fisheye HAL 200 6.0 F4

The 200 degrees image circle in the Fullsize 16:9.



Optical Construction : 17 elements in 12 groups
Lens diameter : ϕ 76mm
Weight : E:948g / EF:790g
Mounts : CANON EF
Image Circle : 180° ϕ 18.2mm / 250° ϕ 19.9mm
Aperture : F4
 (M2-EF-60)



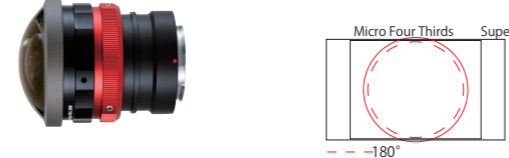
Custom Lenses

The Entaniya Fisheye can customize to suit the user's specific requirements.

220 degree Custom Fisheye C-mount

Entaniya Fisheye HAL 200 4.2 F4

The 180 degrees in the SUPER 35 sensor. HAL 200 3.6 customized. **Built-to-order**

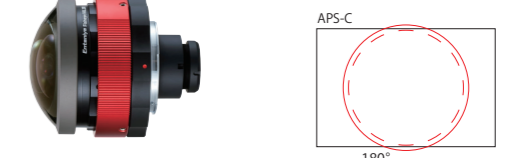


Optical Construction : 17 elements in 12 groups
Lens diameter : ϕ 76mm
Weight : 860g
Mounts : SONY E / CANON EF
Image Circle : 180° ϕ 13.8mm / 250° ϕ 12.7mm
Aperture : F4.0
 (M2-C-42)

220 degree Custom Fisheye EF-mount

Entaniya Fisheye HAL 200 5.0 F5.6

HAL 200 6.0 customized. **Built-to-order**

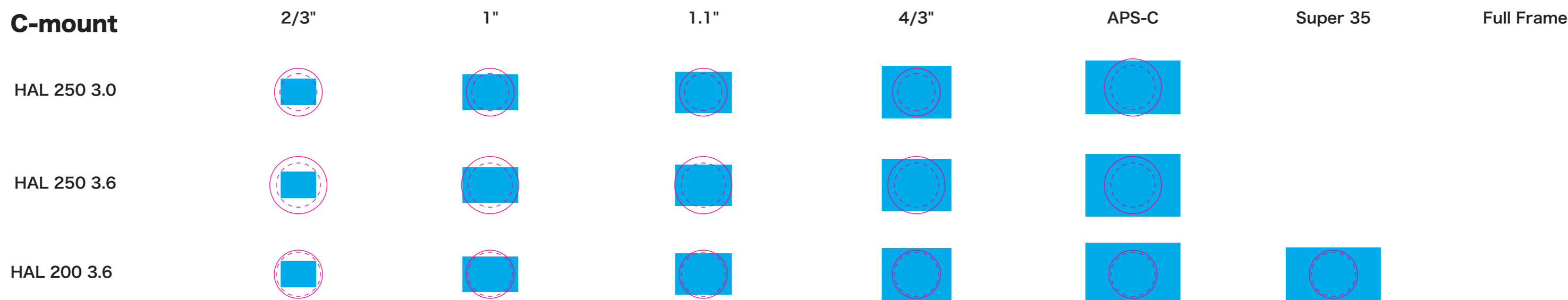


Optical Construction : 17 elements in 12 groups
Lens diameter : ϕ 76mm
Weight : E:948g / EF:790g
Mounts : SONY E / CANON EF
Image Circle : 180° ϕ 15.2mm / 250° ϕ 16.6mm
Aperture : F5.6
 (M2-EF-5)

SPECIFICATIONS

Lens Name	Optical Construction [Elements / Groups]	Image Size [180 degree]	Image Size	Iris Blades	Angle of View Micro Four Thirds	Angle of View S35	Angle of View FullFrame	Fno.	Diameter x Length	Weight	Mount
■ HAL 250 series											
HAL 250 2.3	18/12	φ 7 mm	φ 9 mm	-	H:250 V:250	H:250 V:250	-	F2.8	120 x 95.2 mm	1.6 kg	MFT
HAL 250 3.0	18/12	φ 9.2mm	φ 11.9 mm	-	H:250 V:250	H:250 V:250	-	F2.8	120 x 95 mm	1.6 kg	MFT / E / C
HAL 250 3.6	18/12	φ 11 mm	φ 14.25 mm	-	H:250 V:220	H:250 V:210	-	F2.8	120 x 93.6 mm	1.6 kg	MFT / E / C
HAL 250 4.3	18/12	φ 13.1 mm	φ 17 mm	-	H:250 V:170	H:250 V:180	H:250 V:250	F4.0	120 x 105 mm	1.8 kg	E / EF
HAL 250 6.0	18/12	φ 18.2 mm	φ 23.7 mm	-	H:170 V:125 D:230	H:245 V:125	H:250 V:250	F5.6	120 x 115 mm	1.8 kg	E / EF
■ HAL 200 series											
HAL 200 3.6	17/11	φ 11 mm	φ 12 mm	-	H:200 V:200	H:200 V:200	-	F4.0	76 x 97 mm	0.86 kg	MFT / E / C
HAL 200 4.2	17/11	φ 12.4 mm	φ 13.8 mm	-	H:200 V:180	H:200 V:190	-	F4.0	76 x 97 mm	0.86 kg	MFT / E / C
HAL 200 5.0	17/11	φ 15.2 mm	φ 16.6 mm	-	H:200 V:150	H:200 V:150	-	F5.6	78 x 115 mm	0.9 kg	E / EF
HAL 200 6.0	17/11	φ 18.2 mm	φ 19.9 mm	-	H:165 V:125	H:200 V:130	H:200 V:200	F4.0	78 x 110 mm	0.9 kg	E / EF

C-mount



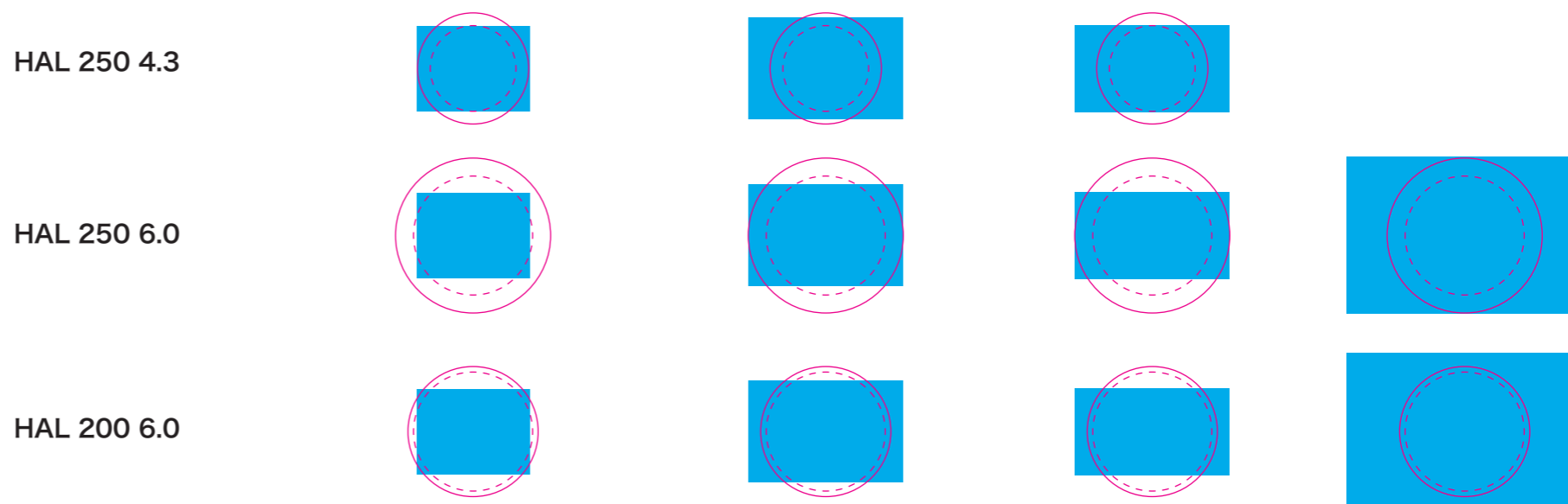
Red solid line : maximum image circle.
Red dot line : maximum 180 degree image circle



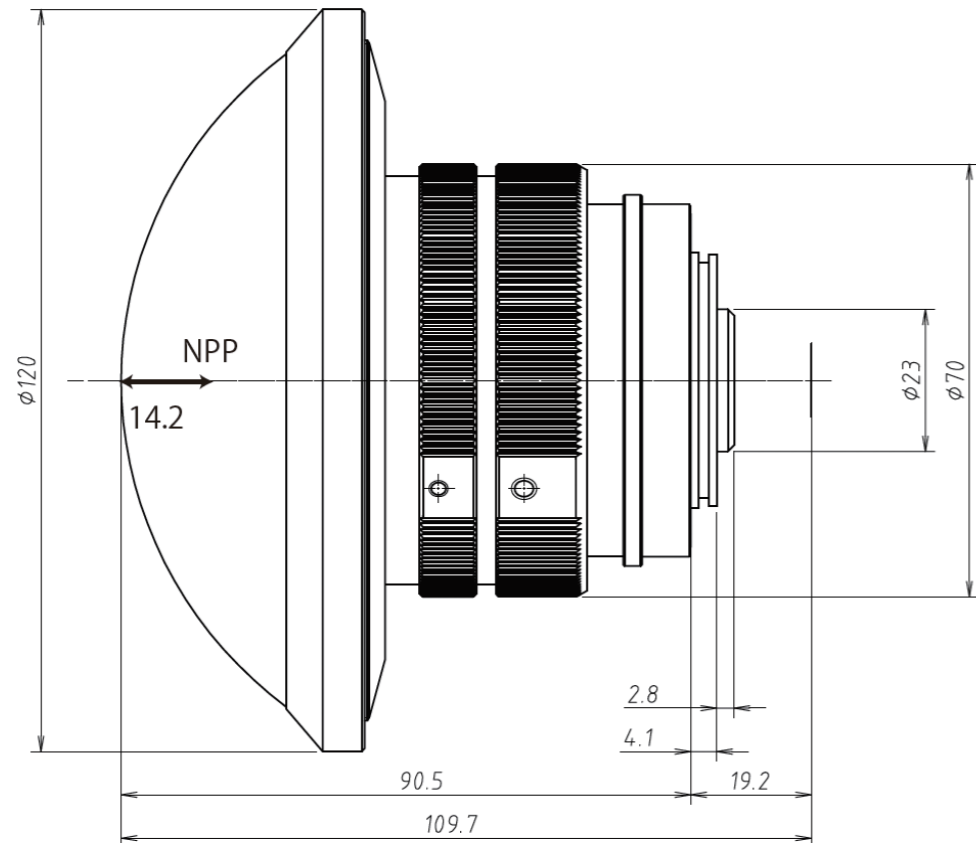
HAL 200 C 3.6 (1")

EF-mount

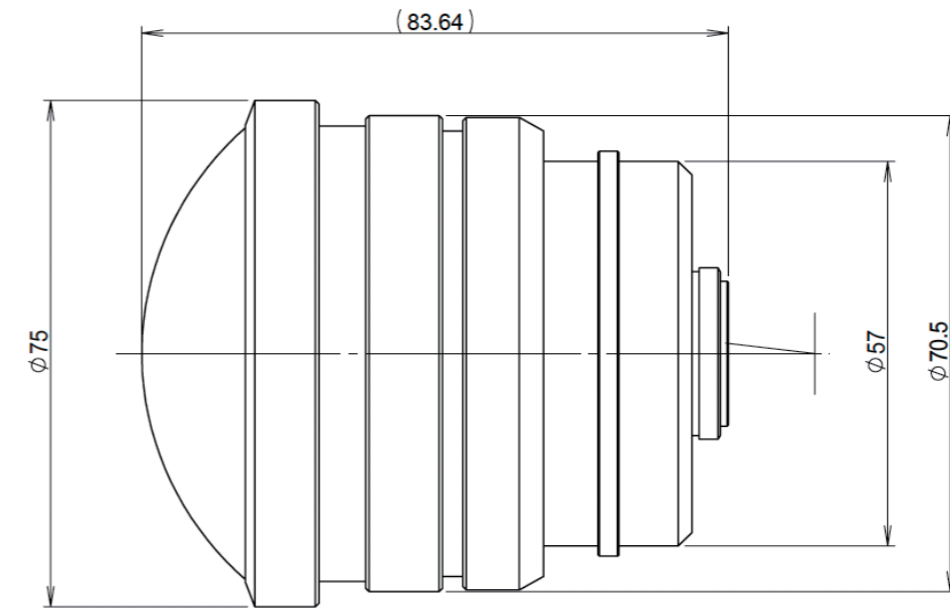
※ Our EF-mount lenses have a flange back that is designed for mirrorless cameras. Please consult with us if you are considering mounting an EF-mount lens on your camera.



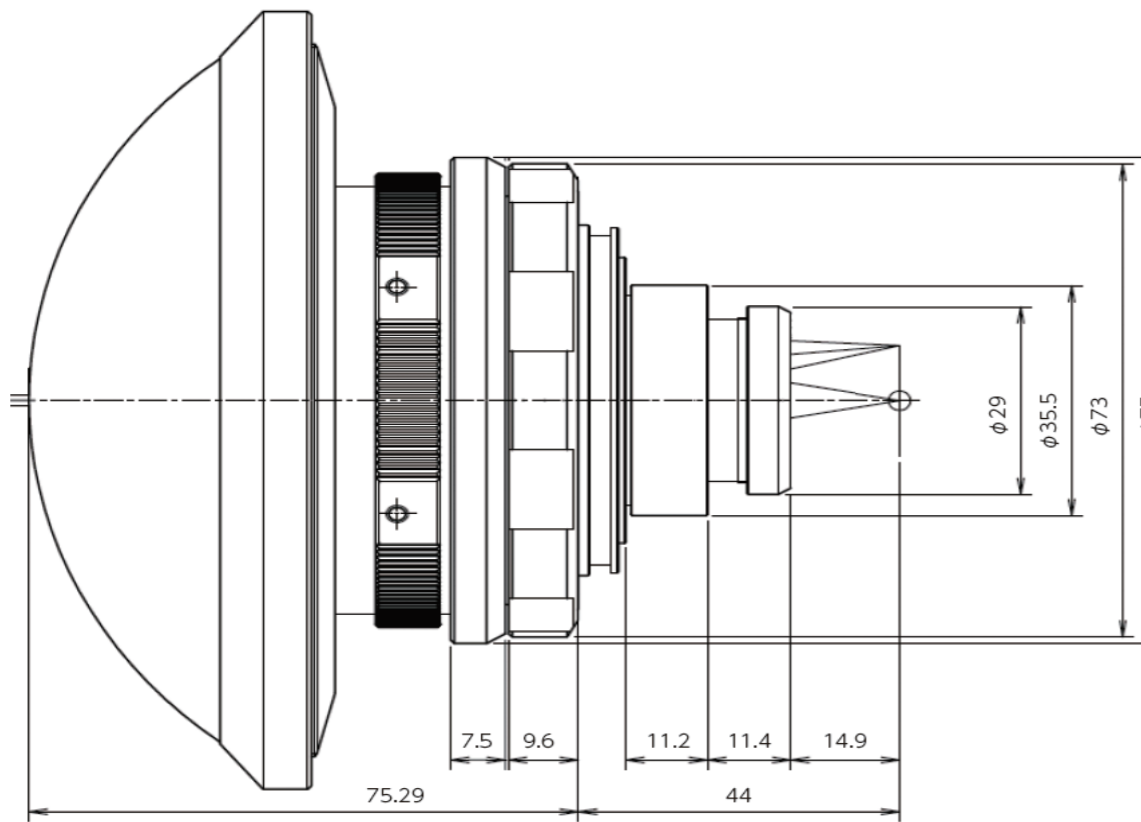
HAL 250 3.6



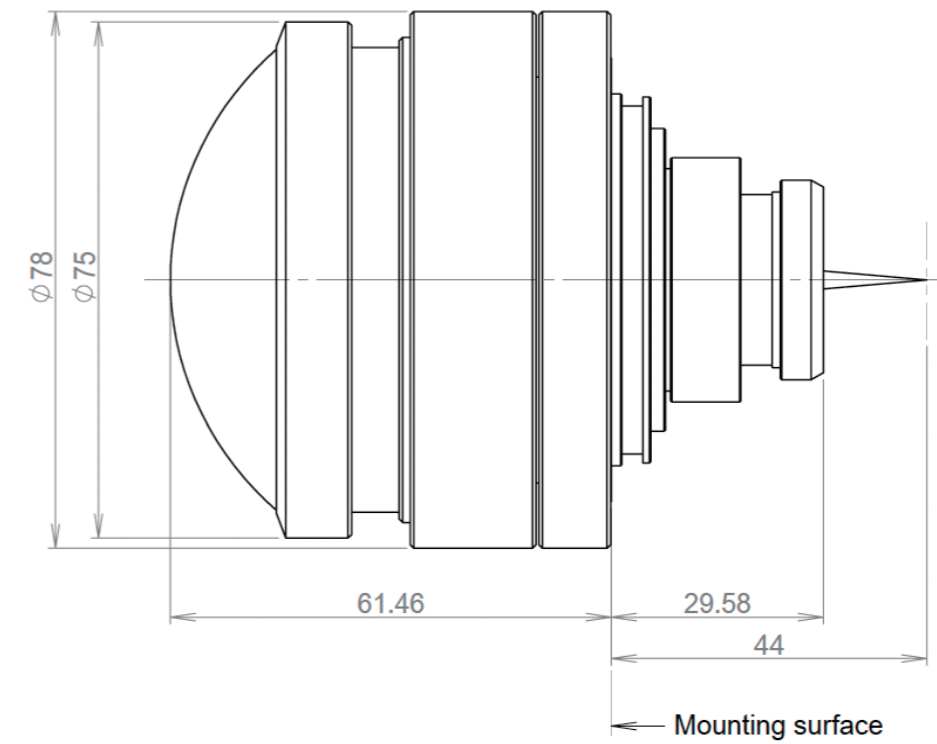
HAL 200 3.6 C-mount



HAL 250 4.3 EF-mount



HAL 200 6.0 EF-mount



M12 Series

S-mount(P0.5/M12)
with CS-mount adapter

200 degree Fisheye

Entaniya Fisheye M12 220 F2.0



Angel of View : 220°
Optical Construction : 10 elements + IR Filter
Lens diameter : ϕ 40mm
Weight : 52g
Mount : M12 P0.5 (S mount) + CS mount adapter
Projection : Equidistant
Image Circle : ϕ 5.1mm (1/3.2" -1/1.7"Sensor)
Aperture : F2.0
(EF-220)



M12 220 (1/2.3")

250 degree Fisheye

Entaniya Fisheye M12 250 F2.8



Angel of View : 250°
Optical Construction : 11 + IR Filter
Lens diameter : ϕ 50mm
Weight : 79g
Mount : M12 P0.5 (S mount) + CS mount adapter
Projection : Equidistant
Image Circle : ϕ 5.5mm (1/3.2" -1/1.7"Sensor)
Aperture : F2.8
(EF-250)



M12 250 (1/2.3")

280 degree Fisheye

Entaniya Fisheye M12 280 F2.8



Angel of View : 280°
Optical Construction : 12 + IR Filter
Lens diameter : ϕ 64mm
Weight : 175g
Mount : M12 P0.5 (S mount) + CS mount adapter
Projection : Equisolid angle
Image Circle : ϕ 5.1mm (1/3.2" -1/2.3"Sensor)
Aperture : F2.8
(EF-280)



M12 280 (1/2.3")



M12 220

M12 250

M12 280

1/4"



1/3.6"



1/3.2"



1/3"



1/2.9"



1/2.7"



1/2.5"



1/2.3"



1/1.8"



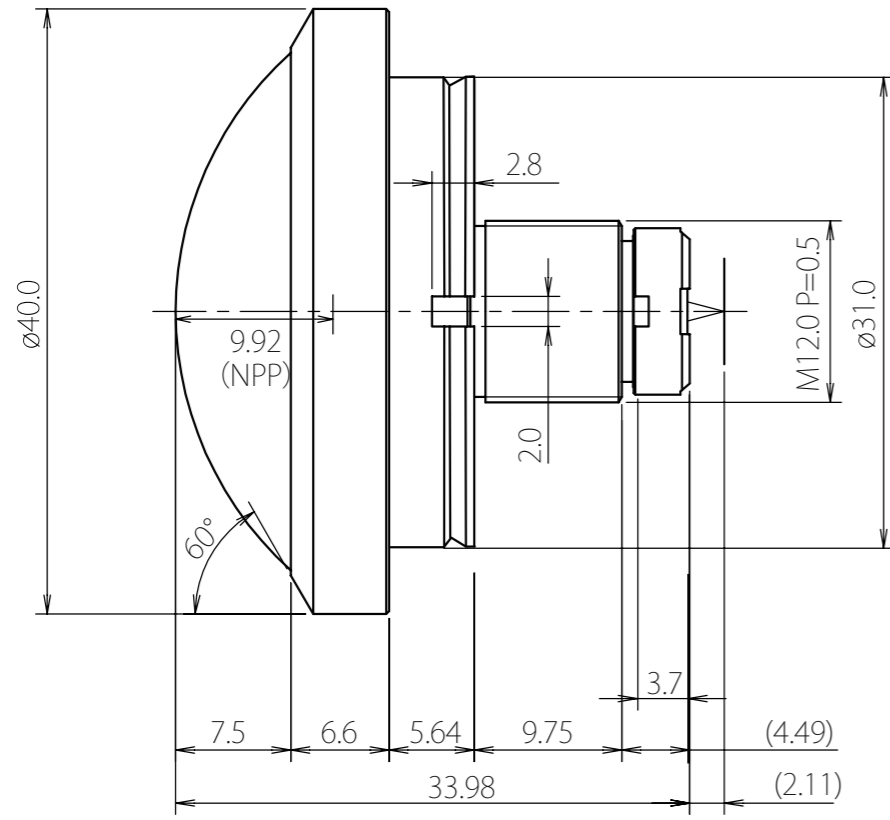
1/1.7"



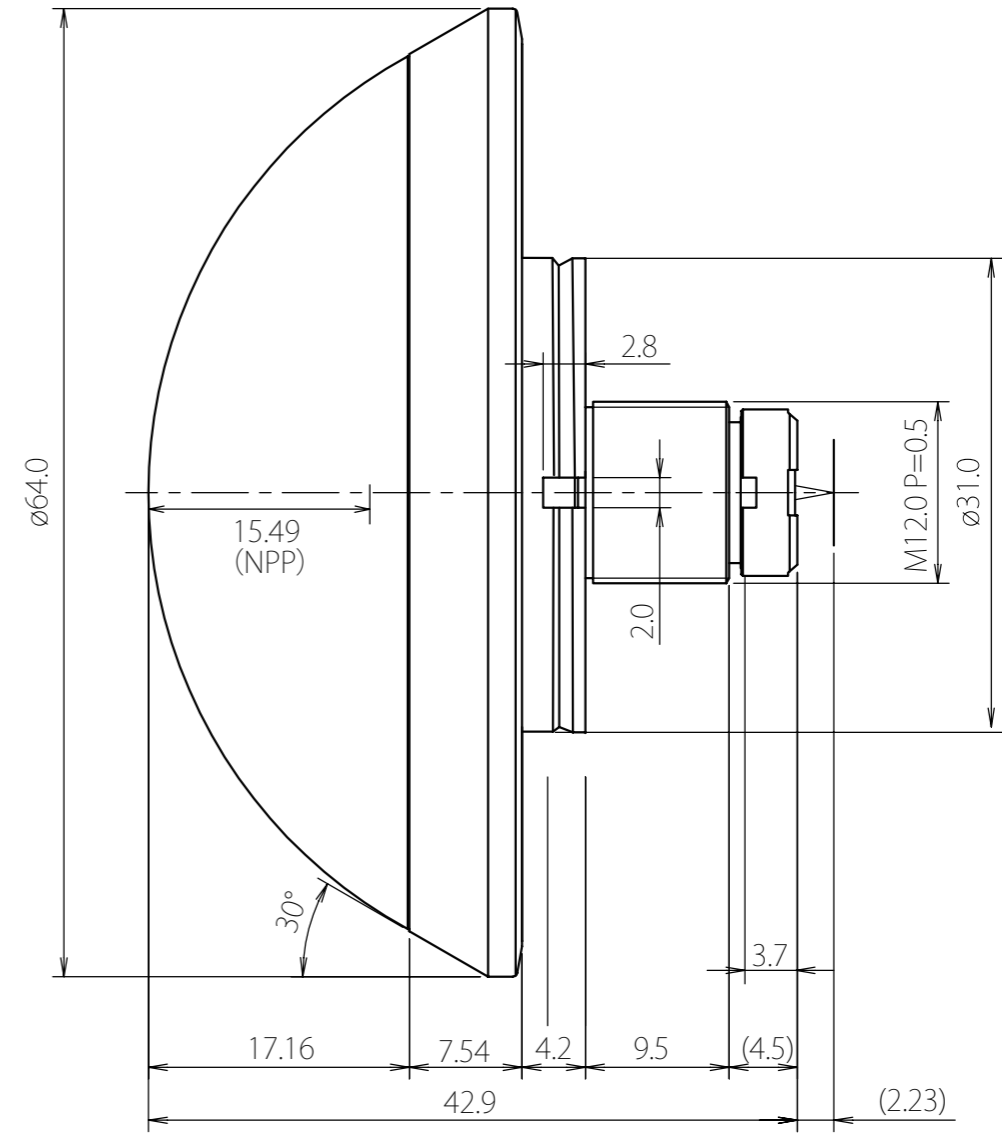
2/3"



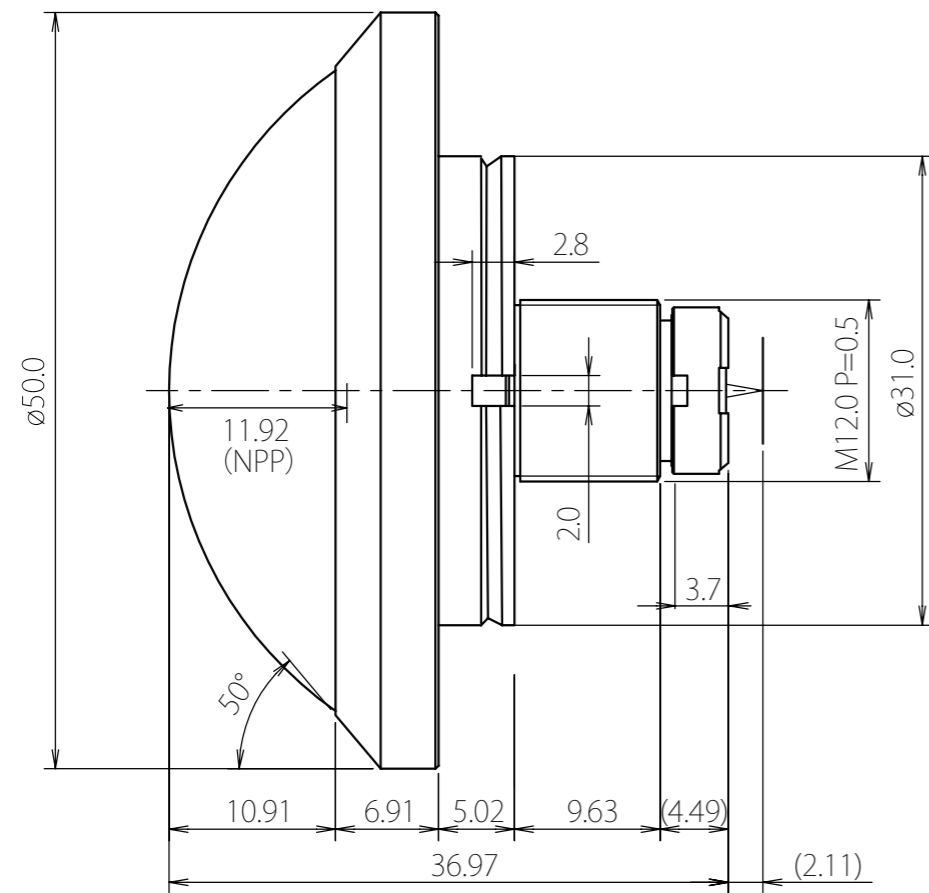
M12 220



M12 280



M12 250



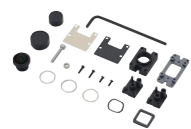
RaspberryPi

RaspberryPi Camera V2 MOD KIT MOD Camera All Weather Case



RaspberryPi Camera Module

RaspberryPi VR 220 MOD KIT

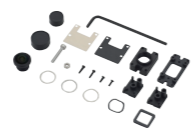


(RP-MK1)

Raspberry Pi VR 220 MOD KIT is for attaching a 220° lens (Super Wide Fisheye) to the Raspberry Pi Camera V2. Raspberry Pi Camera V2 is not included.

RaspberryPi Camera Module

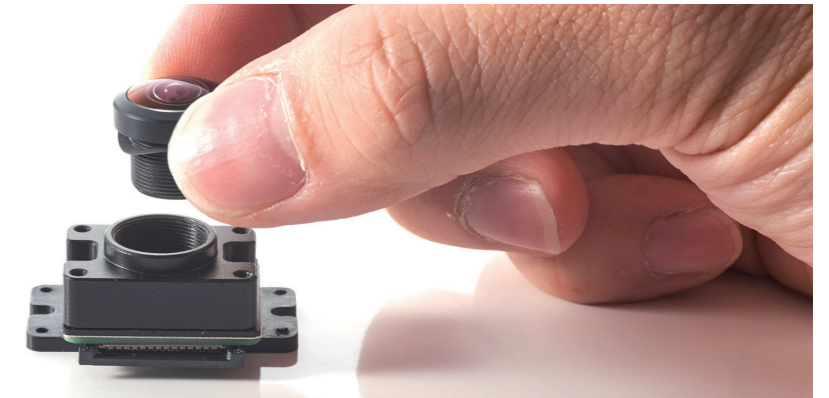
NoIr RaspberryPi VR 220 MOD KIT



(RP-MK1N)

Raspberry Pi VR 220 MOD KIT is for attaching a 220° lens (Super Wide Fisheye) to the Raspberry Pi Camera V2. Raspberry Pi Camera V2 is not included.

Attaching Lenses



RaspberryPi Camera Module

VR 220 Camera



with Sensor Cover Glass (RP-VC1G)
without Sensor Cover Glass (RP-VC1)

Raspberry Pi VR 220 Camera is Pre-Assembled module.

RaspberryPi Camera Module

NoIr VR 220 Camera



with Sensor Cover Glass (RP-VC1GN)
without Sensor Cover Glass (RP-VC1N)

Raspberry Pi VR 220 Camera is Pre-Assembled module.

Housing Case

Water Proof Case (All Weather Type)



(WC-01)

The waterproof and dustproof case for Raspberry Pi's and SPRESENSE's Camera Module.

Accessory

Water Proof Case Mount



(WCM-01)

Mounting bracket for Water Proof Case(WC-01)

Lens

RP-L220 / NoIr RP-L220

220 degree



(RP-L220) / (RP-L220N)



Lens

RP-L195 / NoIr RP-L195

195 degree



(RP-L195) / (RP-L195N)



Lens

RP-L165 / NoIr RP-L165

165 degree



(RP-L165) / (RP-L165N)



Lens

RP-L98 / NoIr RP-L98

98 degree

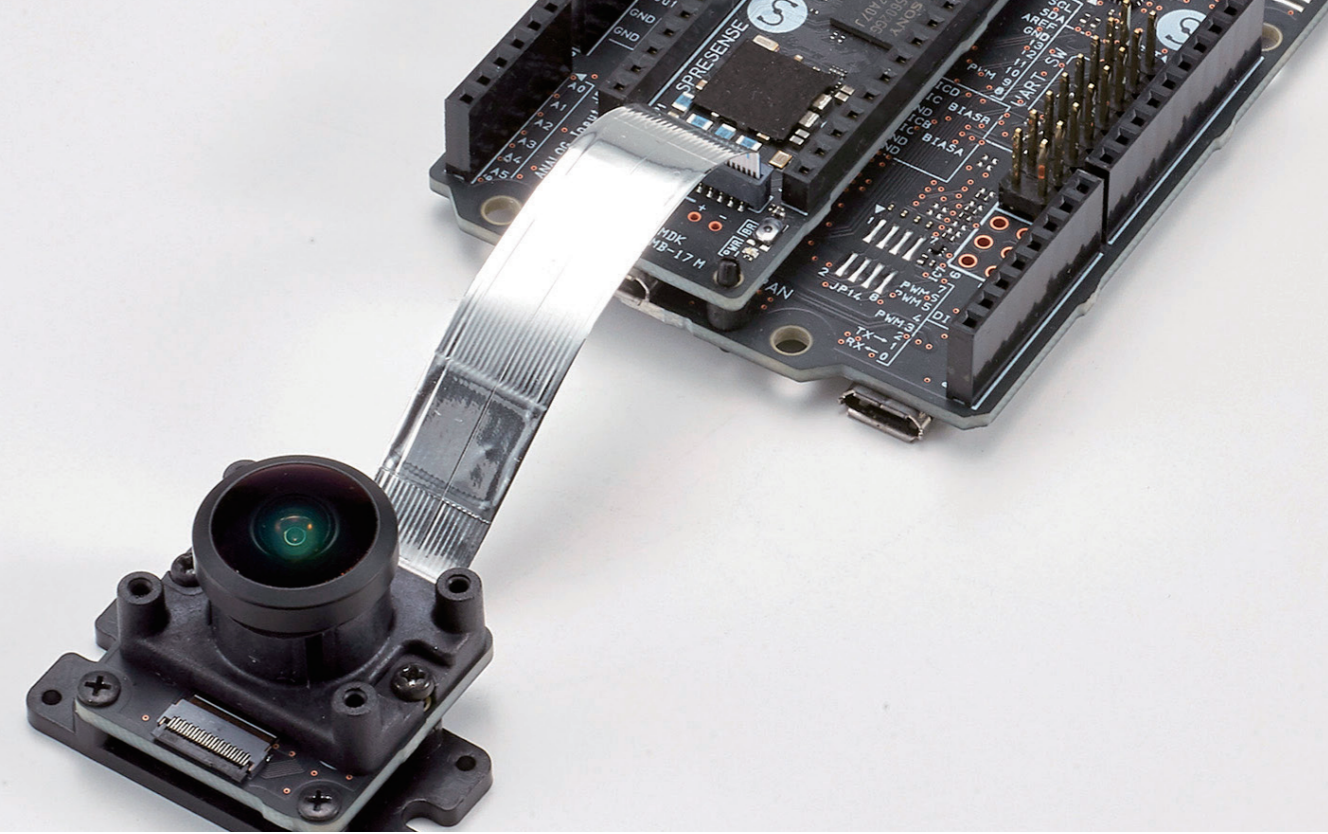


(RP-L98) / (RP-L98N)



SPRESENSE

Camera Module MOD KIT MOD Camera All Weather Case



Sony SPRESENSE Camera Module

VR 220 MOD KIT for SPRESENSE



(SS-MK1)

VR 220 MOD KIT is for attaching a 220° lens (Super Wide Fisheye) to the Sony SPRESENSE camera module. Sony SPRESENSE camera module is not included.

Sony SPRESENSE Module

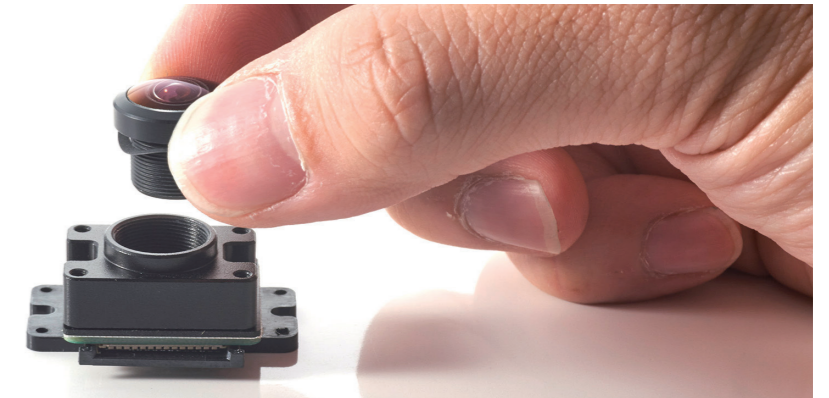
VR 220 Camera for SPRESENSE



(SS-VC1)

VR 220 Camera is Pre-Assembled module.

Attaching Lenses



Housing Case

Water Proof Case (All Weather Type)



(WC-01)

The waterproof and dustproof case for Raspberry Pi's and SPRESENSE's Camera Module.

Accessory

Water Proof Case Mount



(WCM-01)

Mounting bracket for Water Proof Case(WC-01)



Lens

SS-L220



(SS-L220)

220 degree



Lens

SS-L195



(SS-L195)

195 degree



Lens

SS-L165



(SS-L165)

165 degree



Lens

SS-L98



(SS-L98)

98 degree





Entaniya Co., Ltd.

ITO BLDG 5F, 2-5-13, Nishiwaseda, Shinjuku-ku, Tokyo, 169-0051, Japan

<https://entaniya.co.jp>

Specifications and equipment are subject to change without any notice or obligation on the part of the manufacturer.